

Sterling mantel clock

Les Pook
© 2017 Sevenoaks, UK

Figures 1 and 2 show a Sterling synchronous mantel clock. The dial is marked 'Made in Great Britain'. It is for a 220-250 V 50 Hz supply. The walnut veneer case is 22 cm high × 21 cm wide. The dial is 14 cm diameter with a chrome bezel, and black Arabic numerals and hands. The brand on the front is Sterling. To start the clock turn the starter knob and release. The seconds hand acts as a tell tale. A rear view of the movement is shown in Figure 3.



Figure 1



Figure 2

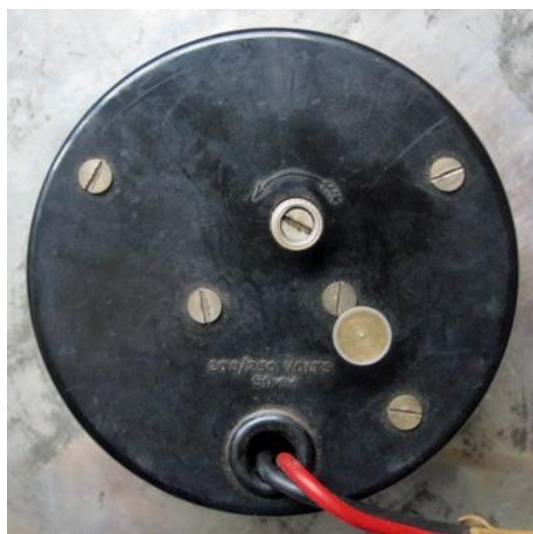


Figure 3